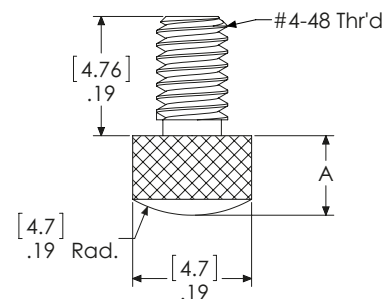


MarCator

Standard Measuring Anvil

Order no.	Product type	Dimension A	Measuring surface	Number	Set contents
2225870	PT-225	1/8"	hardened steel	1	
2225867	PT-223	1/4"	hardened steel	1	
2225904	PT-35	1/4"	carbide tipped	1	
2225902	PT-317	1/4"	diamond	1	
2225973	PT-563	3/8"	hardened steel	1	
2225763	PT-14	1/2"	hardened steel	1	
2225974	PT-564	5/8"	hardened steel	1	
2225901	PT-31	3/4"	hardened steel	1	
2225799	PT-201	7/8"	hardened steel	1	
2225885	PT-232	1"	hardened steel	1	
2225900	PT-305	1-1/8"	hardened steel	1	
2225975	PT-565	1-1/4"	hardened steel	1	
2225888	PT-239	1-3/8"	hardened steel	1	
2225933	PT-50	1-1/2"	hardened steel	1	
2225887	PT-235	1-5/8"	hardened steel	1	
2225890	PT-241	1-3/4"	hardened steel	1	
2225738	PT-100	1-7/8"	hardened steel	1	
2225934	PT-51	2"	hardened steel	1	
2225891	PT-243	2-1/8"	hardened steel	1	
2225986	PT-696	2-1/4"	hardened steel	1	
2225739	PT-101	2-3/8"	hardened steel	1	
2225892	PT-245	2-1/2"	hardened steel	1	
2225740	PT-102	2-5/8"	hardened steel	1	
2225976	PT-566	2-3/4"	hardened steel	1	
2225893	PT-247	2-7/8"	hardened steel	1	
2225765	PT-155	3"	hardened steel	1	
2225756	PT-116	1/8" - 1"	hardened steel	8	1/8" - 1" in increments of 1/8"
2225755	PT-115	1/8" - 3"	hardened steel	24	1/8" - 3" in increments of 1/8"



MarCator AL-19 / AL-673 / AL-51 / AL-20 / AL-21 / AL-22 / AL-23 / AL-24 / AL-25 / AL-55

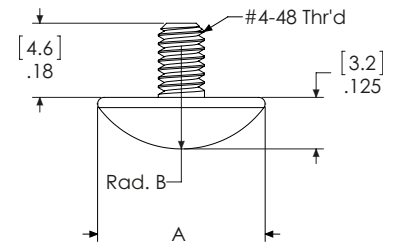
Plane measuring anvil

Order no.	Product type	Dimension A	Measuring surface	Number	Set contents
2202280	AL-19	1/8"	hardened steel	1	
2202337	AL-673	1/4"	hardened steel	1	
2202322	AL-51	1/4"	carbide tipped	1	
2202281	AL-20	3/8"	hardened steel	1	
2202283	AL-21	1/2"	hardened steel	1	
2202284	AL-22	5/8"	hardened steel	1	
2202285	AL-23	3/4"	hardened steel	1	
2202286	AL-24	7/8"	hardened steel	1	
2202287	AL-25	1"	hardened steel	1	
2202327	AL-55	1/8" - 1"	hardened steel	8	1/8" - 1" in increments of 1/8"

MarCator PT-227 / PT-120 / PT-619

Spherical Disk Type Anvil

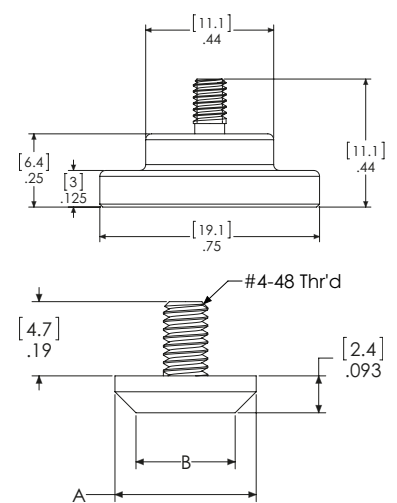
Order no.	Product type	Dimension A	Dimension B	Measuring surface	Number
2225880	PT-227	.375"	.250"	hardened steel	1
2225760	PT-120	.375"	.250"	carbide tipped	1
2225983	PT-619	.500"	.375"	hardened steel	1



MarCator AL-291 / AL-502 / AL-1730 / AL-1510 / AL-520 / AL-44

Disk type anvil

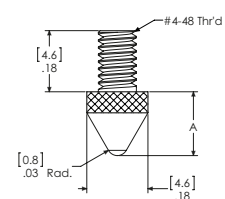
Order no.	Product type	Dimension A	Dimension B	Measuring surface	Number
2202291	AL-291			hardened steel	1
2202321	AL-502	.356"	.250"	hardened steel	1
2202257	AL-1730	.356"	.250"	carbide tipped	1
2202256	AL-1510	.500"	.375"	hardened steel	1
2202324	AL-520	.615"	.500"	hardened steel	1
2202315	AL-44	.731"	.625"	hardened steel	1



MarCator PT-233 / PT-229 / PT-181 / PT-182 / PT-253 / PT-183 / PT-230 / PT-231

Conical measuring anvil

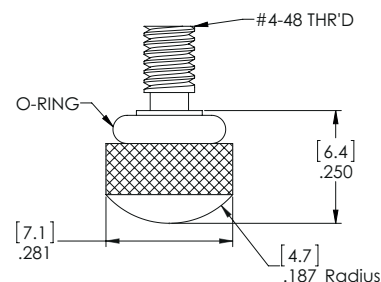
Order no.	Product type	Dimension A	Measuring surface	Number
2225886	PT-233	3/16"	hardened steel	1
2225881	PT-229	7/16"	hardened steel	1
2225778	PT-181	7/16"	carbide tipped	1
2225779	PT-182	3/4"	carbide tipped	1
2225894	PT-253	1"	hardened steel	1
2225780	PT-183	1"	carbide tipped	1
2225883	PT-230	1-7/16"	hardened steel	1
2225884	PT-231	2"	hardened steel	1



MarCator PT-2263

Measuring Anvil with Shock Protection

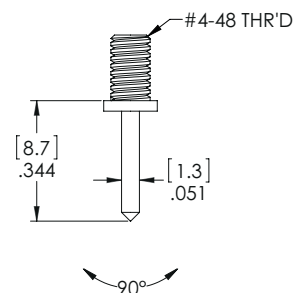
Order no.	Product type	Length	Measuring surface	Number
2225875	PT-2263	.25"	hardened steel	1



MarCator PT-2265

Conical Measuring Anvil

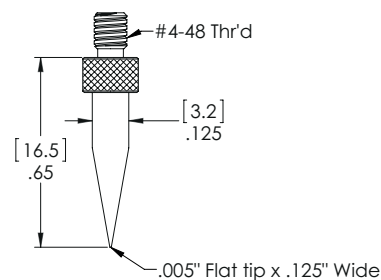
Order no.	Product type	Angle	Measuring surface	Number
2225876	PT-2265	90	hardened steel	1



MarCator PT-2266

Conical Measuring Anvil, leveled

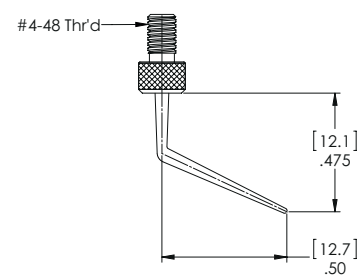
Order no.	Product type	Measuring surface	Number
2225877	PT-2266	hardened steel	1



MarCator PT-2267

Offset Measuring Anvil

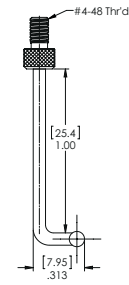
Order no.	Product type	Measuring surface	Number
2225878	PT-2267	hardened steel	1



MarCator PT-2268

Angled Measuring Anvil

Order no.	Product type	Measuring surface	Number
2225879	PT-2268	hardened steel	1



MarCator

Adaptor #4-48 male to M2.5 female Threads

Order no.	Number
2236519	1